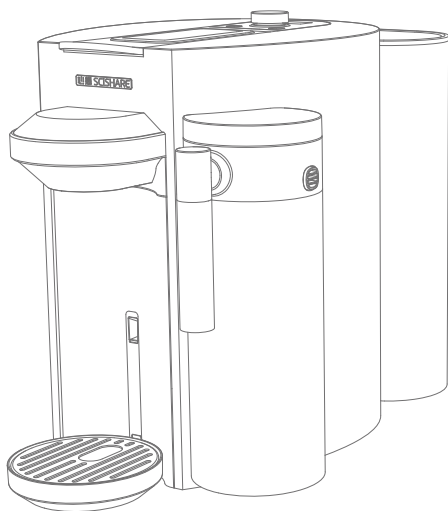


# SCISHARE

## Instruction Manual Fancy Capsule Coffee Machine

S1205



Thank you for purchasing a SCISHARE product. To ensure you fully enjoy comprehensive support from SCISHARE, please read this instruction manual and related illustrations in detail before using the product, and keep them in a safe place. If there are minor changes to the product, please refer to the actual item.

---

## Safety Explain

**Read these instructions carefully before using your new coffee machine for the first time. Keep them in a place where you can find and refer to them later on.**

**.In case of an emergence: immediately remove the plug from the power socket.**

**.Children can never use the appliance without close adult supervision.**

**.Check that the voltage quoted on the rating plate is as same as your mains voltage.**

**.Connect your appliance only to an earthed power sockets.**

**The use of incorrect connections voids the warranty!**

- Your machine is household use only.
- Remove the plug from the main socket if you will not be using the machine for an extended time (holidays).
- Before cleaning and servicing, remove the plug from the main socket and let the machine cool down.
- Never immerse the machine, cable, or plug in water or any liquid. Keep the cable out of children.
- Never leave the cable near or in contact with hot parts of the machine, a source of heat, or a sharp edge.
- Never place the machine on a hot surface, e.g. a heating plate.
- Never use it around an open flame.
- Place the machine on a flat, stable, heat resistant surface away from water splashes.
- If the supply cord is damaged, it must be replaced by the manufacturer, its service agent or similarly qualified persons in order to avoid a hazard.

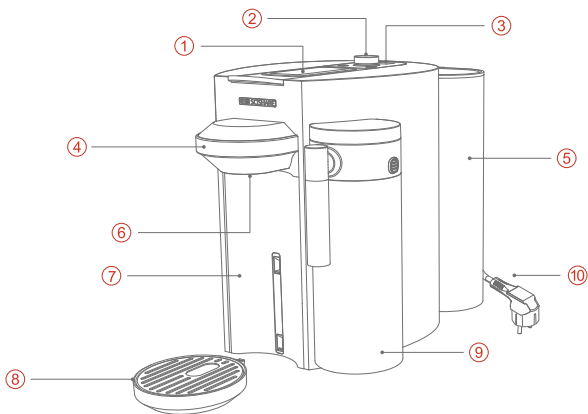
---

**This appliance can be used by children aged from 8 years and above if they have been given supervision or instruction concerning use of the appliance in a safe way and if they understand the hazards involved. Cleaning and user maintenance shall not be made by children unless they are older than 8 and supervised. Keep the appliance and its cord out of reach of children aged less than 8 years. Appliances can be used by persons with reduced physical, sensory or mental capabilities or lack of experience and knowledge if they have been given supervision or instruction concerning use of the appliance in a safe way and understand thin a safe way and understand the hazards involved.**

Children should be supervised to ensure that they do not play with the appliance.

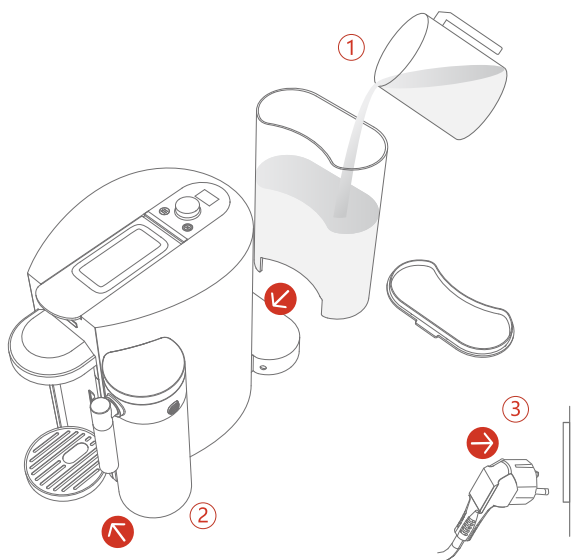
This appliance is intended to be used in household and similar applications such as:

- staff kitchen areas in shops, offices and other working environments;
- farm houses;
- by clients in hotels, motels and other residential type environments;
- bed and breakfast type environments. Cleaning and user maintenance shall not be made by children without supervision.



## Names Of Parts

1. Lever
2. Knob switch
3. OLED
4. Decorate ring
5. Water tank
6. Coffee spout
7. Capsule container
8. Drip tray
9. Milk container
10. Power plug



### 1. Filling the water tank

Before filling the water tank, please clean the water tank, add potable water, then install it on the coffee machine.

Note: Do not use hot water or tap water.

### 2. Install the milk container

Take out the milk container from the package, take off the cover of milk container, clean it and add the fresh milk in container, then put the cover of milk container, and insert it in machine.

### 3. Power on

Connect the power plug to the 220V-240V household power supply and press the Know switch to startup of the machine.

**Tip:** The OLED will show the machine status from Pre heating to Machine Ready.

The heating up time is related to the stability of the actual voltage and the ambient temperature.

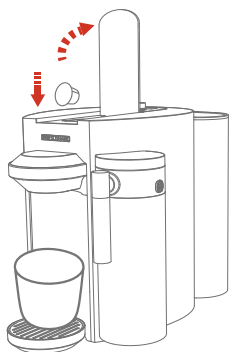


Figure 1

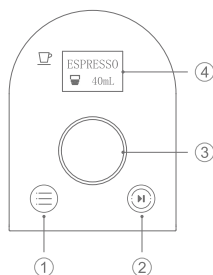


Figure 2

#### 4. Coffee Preparation

Lift the lever completely and insert the capsule. Close the lever and place a cup under the coffee spout as shown in the figure 1;

Press the menu button to enter the coffee mode as shown in the figure 2, then rotate the knob switch to select the coffee drink. Press the start button, the machine will start preheating. Once the preheating is completed, the coffee will be automatically brewed when the coffee volume is ready. Preparation will stop automatically.

After brewing, it's recommended to lift and close the lever to eject the capsule into the used capsule container.

Note: Do not tear off the capsule film and brew the capsule 2nd time.

#### 5. Milk Preparation

Place a big cup under the coffee spout and insert the capsule. Press the menu button to enter the milk mode as shown in the figure 2, then rotate the knob switch to select the milk drink as shown in the figure 2. Press the start button, the machine will start preheating. When the temperature is ready, the milk will be automatically brewed and stop automatically when the volume is ready. Preparation will stop automatically.

---

## 6. Programming the coffee volume

Press the menu button, select the coffee mode as show in the figure 2, then rotate the Knob switch to select the coffee drink.

After the coffee drink is selected, press the Knob switch, the current volume will blinking, rotate the Knob switch to select the new volume and press the Knob switch to keep the setting. Press the startup button and machine will start preheating. After the preheating is completed, the machine will brewing coffee as the setting.

The setting of coffee drink is Espresso/Americano/Latte/Cappuccino.

The setting range of Espresso coffee is 25/40/110mL;

The setting range of Americano coffee is 120/150/200mL;

The setting range of Latte or Cappuccino is 160/200/220mL;

## 7. Programming the water temperature.

Press the menu button, select the water mode as show in the figure 2 then rotate the Knob switch to select the water temperature. After the water temperature is selected, press the Knob switch, the current temperature will blinking. Rotate the Knob switch to select the new volume and press the [Knob switch] to keep the setting.

Press the startup button and machine will start preheating. After the preheating is completed, the machine will brewing water as the setting.

The setting range of water temperature is Normal/45°C/55°C/65°C/75°C/85°C/90°C/hot;

The setting range of water volume is 150/200/250/300mL.

## 8. Programming the milk volume.

Press the menu button, select the milk mode as show in the figure 2 then rotate the Knob switch to select the milk drink: Milk or Milk Froth. After the milk drink is selected, press the Knob switch, the current volume will blinking. Rotate the Knob switch to select the new volume and press the Knob switchj to keep the setting.

Press the startup button and machine will start preheating. After the preheating is completed, the machine will brewing milk as the setting.

The setting range of milk is 100/150/200/250mL;

The setting range of milk froth is 100/150/200/250mL;

---

## 9. Programming the self cleaning.

Press the menu button, select the self cleaning mode as show in the figure 2, then rotate the Knob switch to select the self cleaning. Press the startup button and machine will start preheating. After the preheating is completed, the machine will brewing water as the setting. The setting of self cleaning mode is Clean Milk circle system/Clean Milk tank/Clean Water circle system.

## 10. Energy-saving mode

This machine is equipped with an energy saving function. The machine will automatically power off after 10mins inactivity.

Tip: Press the button Knob switch, the machine will wake up from energy saving model.

## 11. Recover the default factory setting;

During the power-off station, keep and hold on the Knob switch, plug on the power, and select the reset to the factory setting. Then press the Knob switch, the volume will be reset to the default setting.



Read these instructions carefully, because they contain the important information about the safety of installation, use and maintenance. Keep this booklet carefully for consulting when you need it.

- Before using, check that the mechanical and other parts of the machine are intact. The body of the machine, water tank cover, tank and brewing unit must never be broken or cracked. The sheath and plug of the power cord must never be cracked or broken. If this should occur, disconnect the plug immediately and take the machine to an authorized dealer for checking.
- It is advisable to power the machine using a contact breaker (RCD) with operating current not higher than 30 mA.
- Keep the power cord out of the reach of children.
- Make sure the machine is turned off before plugging it into the socket outlet.

- 
- The electrical safety of this machine is only assured when it is connected to an is connected to an efficient earth system, in accordance with the safety regulations in force. Have this important requirement checked by a qualified person. The manufacturer cannot be held responsible for damage caused by lack of an earth.
  - Before plugging in the machine, make sure that the electric power supply is the same as that of the machine.
  - Flying leads or non-approved extensions must not be used for supplying electricity to the machine.
  - Before using the machine, remove all protective films from the outside walls of its body.
  - The first time the machine is used there might be some smell caused by the insulating materials and the heating elements. This disappears after a few minutes.



Do not leave the machine without water in the tank

- Never immerse the machine, power cord and plug in water or other liquids.
- Keep the power cord away from the hot parts of the machine.
- While in operation, the power plug must always be easy to get at in case the machine has to be disconnected.
- Do not disconnect the machine by pulling the power cord.
- Do not move the machine while it is working.
- Do not leave the machine while it is working because this machine hasn't automatic stop function.
- Do not use or put the machine out of doors or near water.
- Always unplug the machine each time after using it.



Do not leave the machine in rooms where the temperature is 0°C or lower. If you are planning not to use the machine for a fairly long time, leave no water in the tank.

- This machine must never be used by children, invalids etc. except under strict supervision, nor in any case by people that have not been properly instructed about how to use it and about the dangers of improper use.
- Do not use the machine with bare feet and wet hands.
- Always unplug the power plug before cleaning the machine and before doing any kind of work on it.

---

## USER SAFETY UNPACKING AND PLACEMENT

- Remove the machine from its packing and check that all the parts are there and are not broken.
- Place the machine on a flat, even, stable, heat-resistant surface, strong enough to bear its weight.
- Do not install or use the machine near curtains or other flammable material and do not place anything on top of it during use.
- Do not place the machine on top of, or close to, additional oven or other equipment that generates heat (for instance, radiators etc.).
- Make sure there is enough space around the machine for proper ventilation.



Packing materials (cardboard, cellophane, metal staples etc.) could cut or cause injury if not handled carefully or if used incorrectly; keep them out of the reach of children or unskilled persons.

## TROUBLESHOOTING

If the machine is not working properly make the simple checks set out below. If the problem is not among those listed or if it still persists, even if you follow the advice given, contact an authorized dealer.

PROBLEM	POSSIBLE CAUSE	POSSIBLE SOLUTION
Machine won't start	Not properly plugged into the power	Make sure it is properly plugged in
The coffee is too cold	The machine is not ready	Wait until the temperature is reached, shown by the indicator light.
Coffee is not being dispensed or it is being done too slowly	Not enough water in the tank	Make sure that the level of the water in the tank is right and, if necessary, add cold natural water.

---

## DISMANTLING

- Taking the machine out of use must be done by authorized staff. The pressure of the water circuit must be fully lowered; the power cord disconnected and any substances potentially harmful to the environment must be disposed of legally and properly.
- Keep the machine out of the reach of children or unqualified persons. If the machine is to be disposed as waste, it must be taken to a centre authorized for recycling electrical and electronic equipment (\*). This is to protect the environment and humans from any possible harm. For more information about recycling please contact the offices of the municipality concerned, the domestic waste disposal service or the retailer.
- Do not dispose of the material in the environment.

Label affixed to the machine as identification according to Directive RAEE/WEEE(2002/06/(\*) EC) on Waste Electrical and Electronic Equipment, destined for the European Market.

## ADDITIONAL WARNINGS

If the plug of the machine does not fit into the socket have the plug changed by a qualified person who should also make sure that the section of the wires of the plug are suitable for the power absorbed by the machine. The use of adaptors, multiple sockets and/or extension cords is not advised. If they have to be used it is necessary to use only simple or multiple adaptors and extension cords compliant with the safety regulations in force and to make sure the capacity limit is not exceeded.

- There are basic rules to be observed when using electrical equipment. In particular;
  - do not touch or use the equipment with wet or damp hands or in bare feet;
  - do not pull on he power lead or the equipment itself for unplugging it;
  - do not allow the equipment be used by children or unskilled persons without supervision.
  - If the machine is broken or not working properly, shut it off and do not tamper with it. If repairs are needed, only go to an authorised dealer. Non-compliance with the foregoing could affect the safety of the machine.

If you decide not to use the machine any more, you must put it out of commission by cutting the power cord, after unplugging the plug from the socket. It is also advisable to make safe any parts of the machine that could be a danger, especially for children who might play with the unused machine.

Installation must be done according to the manufacturer's instructions. Improper installation can cause harm to persons, animals or things, for which the manufacturer cannot be held responsible.

- 
- To avoid dangerous overheating, it is advisable to unwind the whole power cord and only to use the machine as advised in the “Instructions for Use” section.
  - If the power cord of the machine is damaged it must only be replaced by the authorized dealer.
  - The manufacturer cannot be held responsible for any harm to persons, animals or things arising from improper and unreasonable use of the machine and for repairs done by unqualified persons.

# SCISHARE



Ningbo Xinxiang Technology Co., Ltd.  
Zhejiang Province Cixi City Zhouxiang Town Development East Road No. 158  
400-9945-123