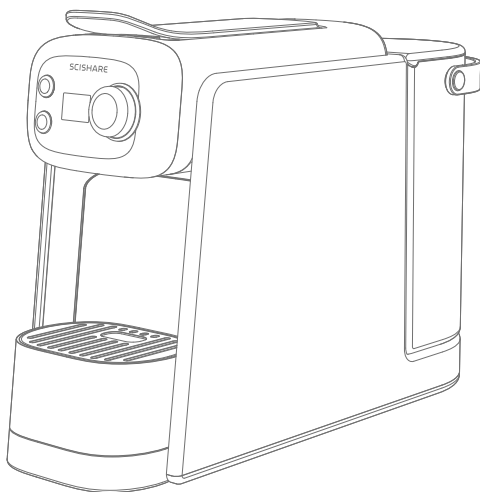


# SCISHARE

## Instruction Manual Capsule Coffee Maker

S1203



Thank you for purchasing a SCISHARE product. To ensure you fully enjoy comprehensive support from SCISHARE, please read this instruction manual and related illustrations in detail before using the product, and keep them in a safe place. If there are minor changes to the product, please refer to the actual item.

---

## Safety Explain

**Read these instructions carefully before using your new coffee machine for the first time.**

**Keep them in a place where you can find and refer to them later on.**

**.In case of an emergency: immediately remove the plug from the power socket.**

**.Children can never use the appliance without close adult supervision.**

**.Check that the voltage quoted on the rating plate is as same as your mains voltage.**

**.Connect your appliance only to an earthed power sockets.**

**The use of incorrect connections voids the warranty!**

- Your machine is household use only.
- Remove the plug from the main socket if you will not be using the machine for an extended time (holidays).
- Before cleaning and servicing, remove the plug from the main socket and let the machine cool down.
- Never immerse the machine, cable, or plug in water or any liquid. Keep the cable out of children.
- Never leave the cable near or in contact with hot parts of the machine, a source of heat, or a sharp edge.
- Never place the machine on a hot surface, e.g. a heating plate.
- Never use it around an open flame.
- Place the machine on a flat, stable, heat resistant surface away from water splashes.
- If the supply cord is damaged, it must be replaced by the manufacturer, its service agent or similarly qualified persons in order to avoid a hazard.

---

This appliance can be used by children aged from 8 years and above if they have been given supervision or instruction concerning use of the appliance in a safe way and if they understand the hazards involved. Cleaning and user maintenance shall not be made by children unless they are older than 8 and supervised. Keep the appliance and its cord out of reach of children aged less than 8 years. Appliances can be used by persons with reduced physical, sensory or mental capabilities or lack of experience and knowledge if they have been given supervision or instruction concerning use of the appliance in a safe way and understand thin a safe way and understand the hazards involved.

**Children should be supervised to ensure that they do not play with the appliance.**

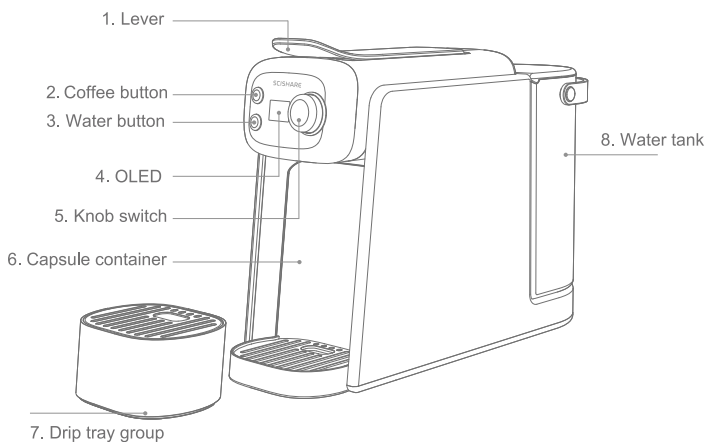
**This appliance is intended to be used in household and similar applications.**

**such as:**

- staff kitchen areas in shops, offices and other working environments;**
- farm houses;**
- by clients in hotels, motels and other residential type environments;**
- bed and breakfast type environments.**

**Cleaning and user maintenance shall not be made by children without supervision.**

# Product Introduction



# Technical Specification

---

Model: S1203-EU

Safe grade: Class I

---

Voltage and power: AC220-240V; 50-60Hz; 1500W

---

Water tank capacity: 1500 mL

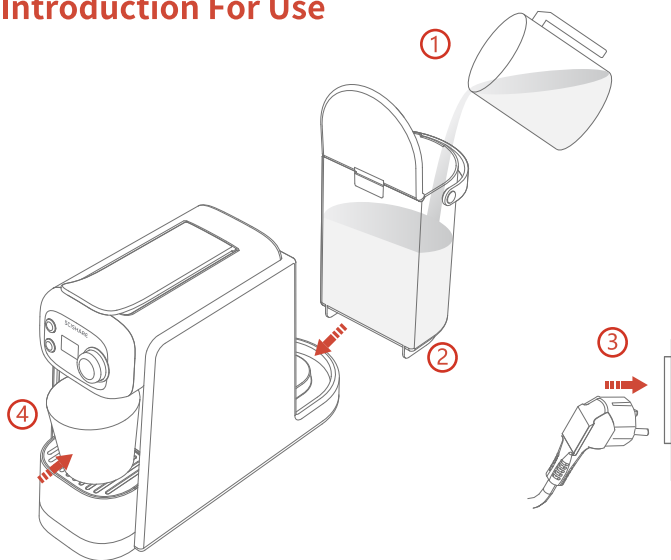
Net Weight: 3.2 kg

---

Size: L365\*W135\*H250mm

---

# Introduction For Use



## ① Filling the water tank

Before fill the water tank, please clean the water tank, fill the water, then install it on the coffee machine.

Note: Do not use hot water or tap water.

## ② Power on

Connect the power plug to the household power supply and press either the Coffee button or Water button to start up.

Tip: The OLED will show the machine status from Pre heating to Machine Ready

The heating up time is related to the stability of the actual voltage and the ambient temperature.

## ③ Coffee Preparation

Lift the lever fully and insert the capsule. Close the lever and place a cup under the coffee spout as shown in Figure 1; Press the coffee button as shown in Figure 2, then rotate and briefly press the knob switch. Once preheating is complete, brewing will start automatically. After brewing, it is recommended to lift and close the lever to eject the capsule into the used capsule container.

Note: Do not remove the capsule film or second use the capsule.

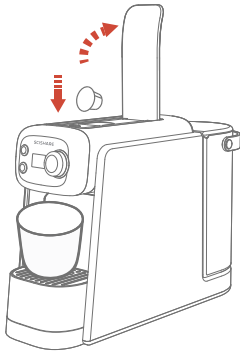


Figure 1

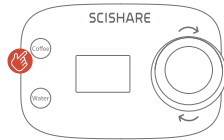


Figure 2

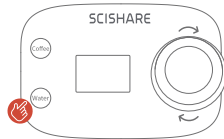


Figure 3

#### 4 Cold Brew Preparation

Lift the lever fully and insert the capsule. Close the lever and place a cup under the coffee spout as shown in Figure 1; Press the coffee button as shown in Figure 2, then rotate the knob switch to select Cold Brew mode and press briefly. The machine will start brewing automatically. After brewing, it is recommended to lift and close the lever to eject the capsule into the used capsule container.

Note: 1. The temperature of the finished cold brew coffee depends on the water temperature.

To reach the better cold brew result, it is recommended to add ice water or ice to the water tank.

2. Do not remove the capsule film or second use the capsule.

#### 5 Hot water Preparation

Place a cup under the coffee spout as shown in the figure 1. Press the water button as show in the Figure 3, select the water temperature and then press the Knob switch.Preparation will stop automatically.

#### 6 Programming coffee volume or water temperature.

Press the coffee button as show in the Figure 1, then rotate the knob switch and select the coffee volume. After the coffee volume is selected,press the Knob switch.After the preheating is completed, the machine will brewing coffee as the last setting. Press the water button as show in the Figure 3, select the watertemperature then press the Knob switch, after the preheating is completed, the machine will brewing water as the last setting;

---

The setting range of Espresso is 25/40/110mL;

The setting range of Cold Brew is 60/80/100mL;

The setting range of Americano is 120/150/200mL;

The setting range of hot water is 150/250/500mL;

The temperature setting range of hot water is Normal/45°C/65°C/85°C/Hot

### **7 Energy-saving mode**

This machine is equipped with an energy saving function. The machine will automatically power off after 10mins inactivity.

Tip: Press either the Coffee or Water button, the machine will wake up from energy saving model.

### **8 Recover the factory default setting;**

In the power-off state, keep and hold press the Knob switch, plug on the plug, and select the factory default setting. Then press the Knob switch, the volume setting will restore factory setting.



**Read these instructions carefully, because they contain important information about safety of installation, use and maintenance. Keep this booklet carefully for consulting when you need it.**

- Before using, check that the mechanical and other parts of the machine are intact. The body of the machine, water tank cover, tank and brewing unit must never be broken or cracked. The sheath and plug of the power cord must never be cracked or broken. If this should occur, disconnect the plug immediately and take the machine to an authorized dealer for checking.
- It is advisable to power the machine using a contact breaker(RCD) with operating current not higher than 30 mA.
- Keep the power cord out of the reach of children.
- Make sure the machine is turned off before plugging it into the socket outlet.

- 
- The electrical safety of this machine is only assured when it is connected to an efficient earth system, in accordance with the safety regulations in force. Have this important requirement checked by a qualified person. The manufacturer cannot be held responsible for damage caused by lack of an earth.
  - Before plugging in the machine, make sure that the electric power supply is the same as that of the machine.
  - Flying leads or non-approved extensions must not be used for supplying electricity to the machine.
  - Before using the machine, remove all protective films from the out-side walls of its body.
  - The first time the machine is used there might be some smell caused by the insulating materials and the heating elements. This disappears after a few minutes.



Do not leave the machine without water in the tank.

- Never immerse the machine, power cord and plug in water or other liquids.
- Keep the power cord away from the hot parts of the machine.
- While in operation, the power plug must always be easy to get at in case the machine has to be disconnected.
- Do not disconnect the machine by pulling the power cord.
- Do not move the machine while it is working.
- Do not leave the machine while it is working because this machine hasn't automatic stop function.
- Do not use or put the machine out of doors or near water.
- Always unplug the machine each time after using it.



Do not leave the machine in rooms where the temperature is 0°C or lower. If you are planning not to use the machine for a fairly long time, leave no water in the tank.

- This machine must never be used by children, invalids etc. except under strict supervision, nor in any case by people that have not been properly instructed about how to use it and about the dangers of improper use.
- Do not use the machine with bare feet and wet hands.
- Always unplug the power plug before cleaning the machine and before doing any kind of work on it.

## USER SAFETY UNPACKING AND PLACEMENT

- Remove the machine from its packing and check that all the parts are there and are not broken.
- Place the machine on a flat, even, stable, heat-resistant surface, strong enough to bear its weight.
- Do not install or use the machine near curtains or other flammable material and do not place anything on top of it during use.
- Do not place the machine on top of, or close to, additional oven or other equipment that generates heat (for instance, radiators etc.)
- Make sure there is enough space around the machine for proper ventilation.



Packing materials (cardboard, cellophane, metal staples etc.) could cut or cause injury if not handled carefully or if used incorrectly; keep them out of the reach of children or unskilled persons.

## TROUBLESHOOTING

If the machine is not working properly make the simple checks as below.

If the problem is not among those listed, please contact an authorized dealer.

PROBLEM	POSSIBLE CAUSE	POSSIBLE SOLUTION
The machine doesn't turn on	The machine is not connected to the power supply	Make sure the plug is properly plugged in power socket
No light indicator after power on	The machine doesn't turn on or in standby function	Press either the Coffee button or Water button
The machine only produce water rather than coffee	No capsule in brewig unit	Insert a new capsule
Coffee is not being dispensed or it comes out very slowly	The capsule is not good condition	Lift and close the level, change a new capsule to brew coffee
The level cannot close	Used capsule container is full	Empty the used capsule container

---

## DISMANTLING

- Taking the machine out of use must be done by authorized staff. The pressure of the water circuit must be fully lowered; the power cord disconnected and any substances potentially harmful to the environment must be disposed of legally and properly.
- Keep the machine out of the reach of children or unqualified persons. If the machine is to be disposed as waste, it must be taken to a centre authorized for recycling electrical and electronic equipment (\*). This is to protect the environment and humans from any possible harm. For more information about recycling please contact the offices of the municipality concerned, the domestic waste disposal service or the retailer.
- Do not dispose of the material in the environment



Do not dispose of electrical appliances as unsorted municipal waste, use separate collection facilities. Contact your local government for information regarding the collection systems available. If electrical appliances are disposed of in landfills or dumps, hazardous substances can leak into the groundwater and get into the food chain, damaging your health and well-being.

---

## ADDITIONAL WARNINGS

- If the plug of the machine does not fit into the socket have the plug changed by a qualified person who should also make sure that the section of the wires of the plug are suitable for the power absorbed by the machine. The use of adaptors, multiple sockets and/or extension cords is not advised. If they have to be used it is necessary to use only simple or multiple adaptors and extension cords compliant with the safety regulations in force and to make sure the capacity limit is not exceeded.
- There are basic rules to be observed when using electrical equipment. In particular;
  - do not touch or use the equipment with wet or damp hands or in bare feet;
  - do not pull on the power lead or the equipment itself for unplugging it;
  - do not allow the equipment be used by children or unskilled persons without supervision.
- If the machine is broken or not working properly, shut it off and do not tamper with it. If repairs are needed, only go to an authorised dealer. Non-compliance with the foregoing could affect the safety of the machine.
- If you decide not to use the machine any more, you must put it out of commission by cutting the power cord, after unplugging the plug from the socket. It is also advisable to make safe any parts of the machine that could be a danger, especially for children who might play with the unused machine.
- Installation must be done according to the manufacturer's instructions. Improper installation can cause harm to persons, animals or things, for which the manufacturer cannot be held responsible.
- To avoid dangerous overheating, it is advisable to unwind the whole power cord and only to use the machine as advised in the "Instructions for Use" section.
- If the power cord of the machine is damaged it must only be replaced by the authorized dealer.
- The manufacturer cannot be held responsible for any harm to persons, animals or things arising from improper and unreasonable use of the machine and for repairs done by unqualified persons.

# SCISHARE



NINGBO SCISHARE TECHNOLOGY CO.,LTD.

NO. 158 KAIFA ROAD(EAST),ZHOUXIANG TOWN, CIXI CITY,  
ZHEJIANG PROVINCE CHINA